



BADAN METEOROLOGI, KLIMATOLOGI, DAN GEOFISIKA
STASIUN METEOROLOGI KELAS III ISKANDAR
KOTAWARINGIN BARAT

Jl. Iskandar, Bandar Udara Iskandar Pangkalan Bun - Kotawaringin Barat 74112
No. Telp/Fax. (0532) 21329, Email : stamet.pangkalanbun@bmkgo.id
Website : <http://bmkgpangkalanbun.info/>

WEATHER CHART STASIUN METEOROLOGI ISKANDAR
TANGGAL 04 AGUSTUS 2022 JAM 00.00 UTC

Iskandar - Pangkalan Bun (WAGI, 96645)

METAR WAGI 040000Z 00000KT 6000 FEW010 BKN010 25/24 Q1010 RMK
CB TO SW AND NE=

TAF WAGI 032300Z 0400/0412 12005KT 9000 BKN012 TEMPO 0403/0406 3000 -RA
BKN011CB=

Tjilik Riwut - Palangkaraya (WAGG, 96655)

METAR WAGG 040000Z 27002KT 9999 SCT011 26/24 Q1010=

TAF WAGG 032300Z 0400/0424 32005KT 9999 BKN011 TEMPO 0407/0411 20013KT
3000 -TSRA FEW010CB=

Ahmad Yani - Semarang (WAHS, 96839)

METAR WAHS 040000Z 08005KT 4000 HZ FEW014 26/23 Q1010 NOSIG=

TAF WAHS 032300Z 0400/0424 10010KT 7000 FEW014 BECMG 0406/0408 33010KT=

Juanda - Surabaya (WARR, 96935)

METAR WARR 040000Z 25003KT 5000 HZ FEW020 25/23 Q1010 NOSIG=

TAF WARR 032300Z 0400/0424 25005KT 5000 HZ FEW020 BECMG 0401/0403 09011KT
9999 NSW BECMG 0412/0414 11006KT 7000 BECMG 0415/0417 25005KT 4000 HZ=

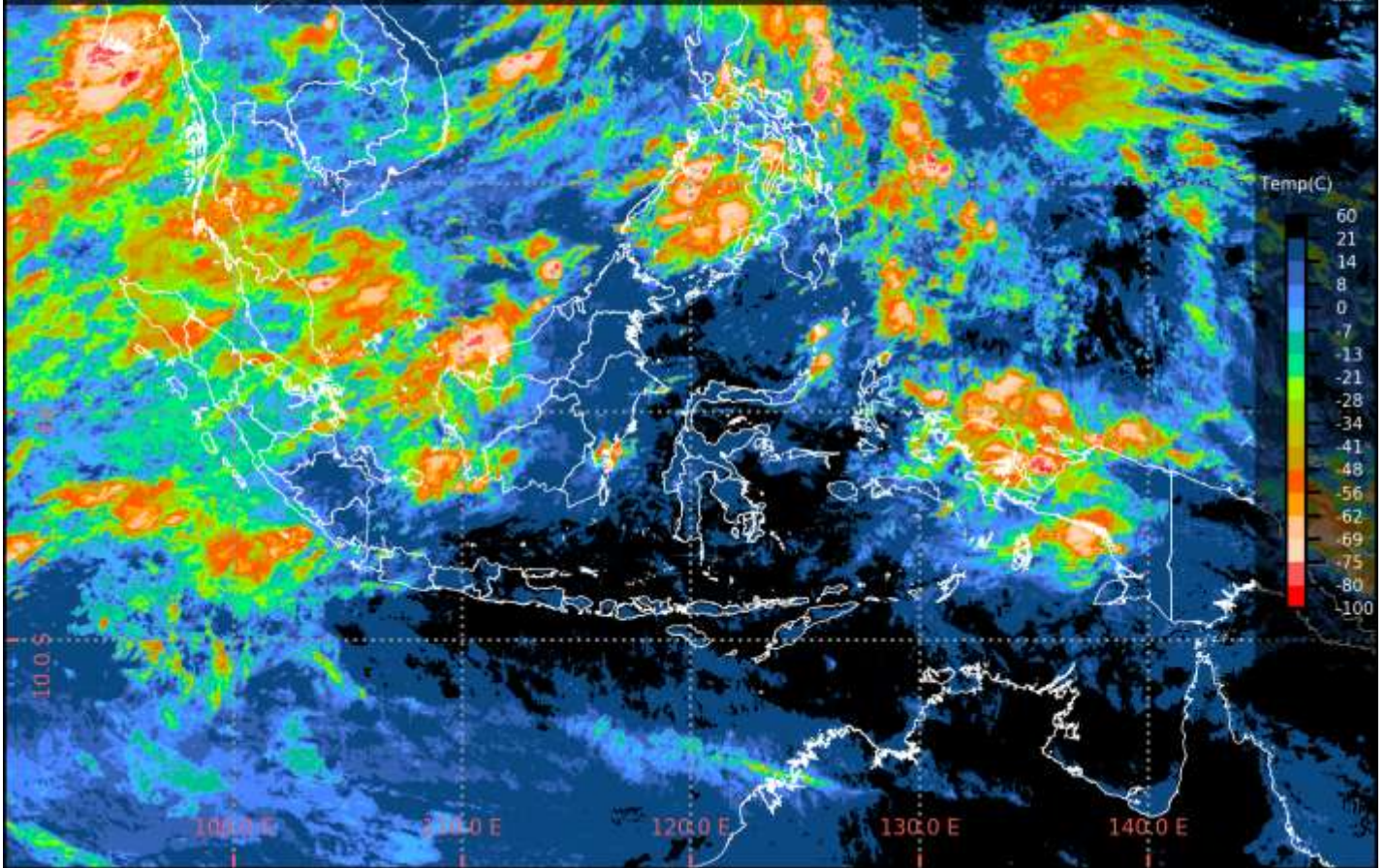
Soekarno Hatta - Jakarta (WIII, 96749)

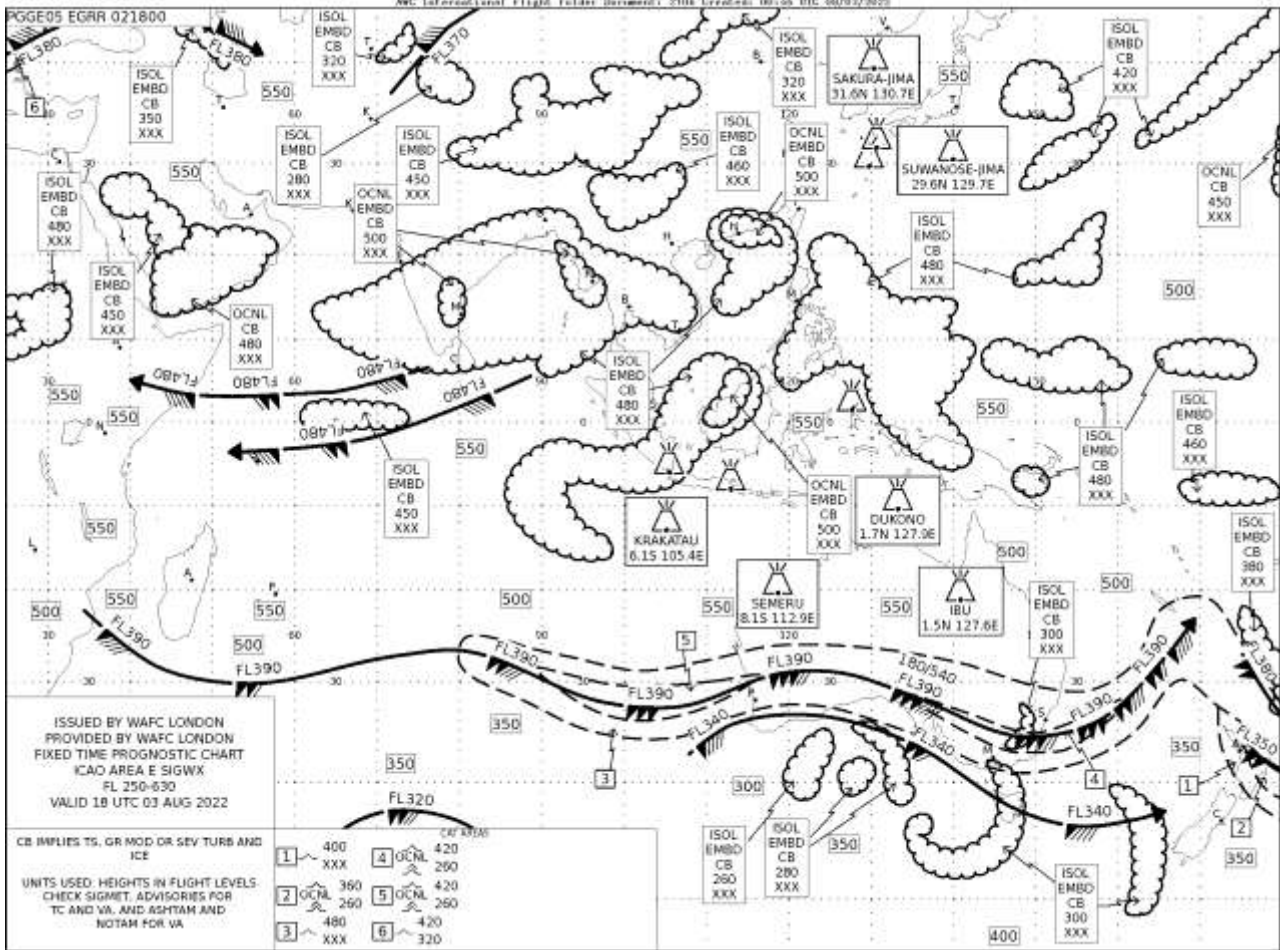
METAR WIII 040000Z VRB03KT 2500 BR FEW020 25/25 Q1010 NOSIG=

TAF WIII 032300Z 0400/0506 VRB04KT 5000 HZ SCT020 BECMG 0402/0404
03010KT 8000 NSW TEMPO 0408/0412 4000 -TSRA FEW018CB=

HIMAWARI 8 EH 04/08/2022 00:00UTC

© Badan Meteorologi, Klimatologi, dan Geofisika - 2022





90°E 100°E 110°E 120°E 130°E 140°E 150°E

